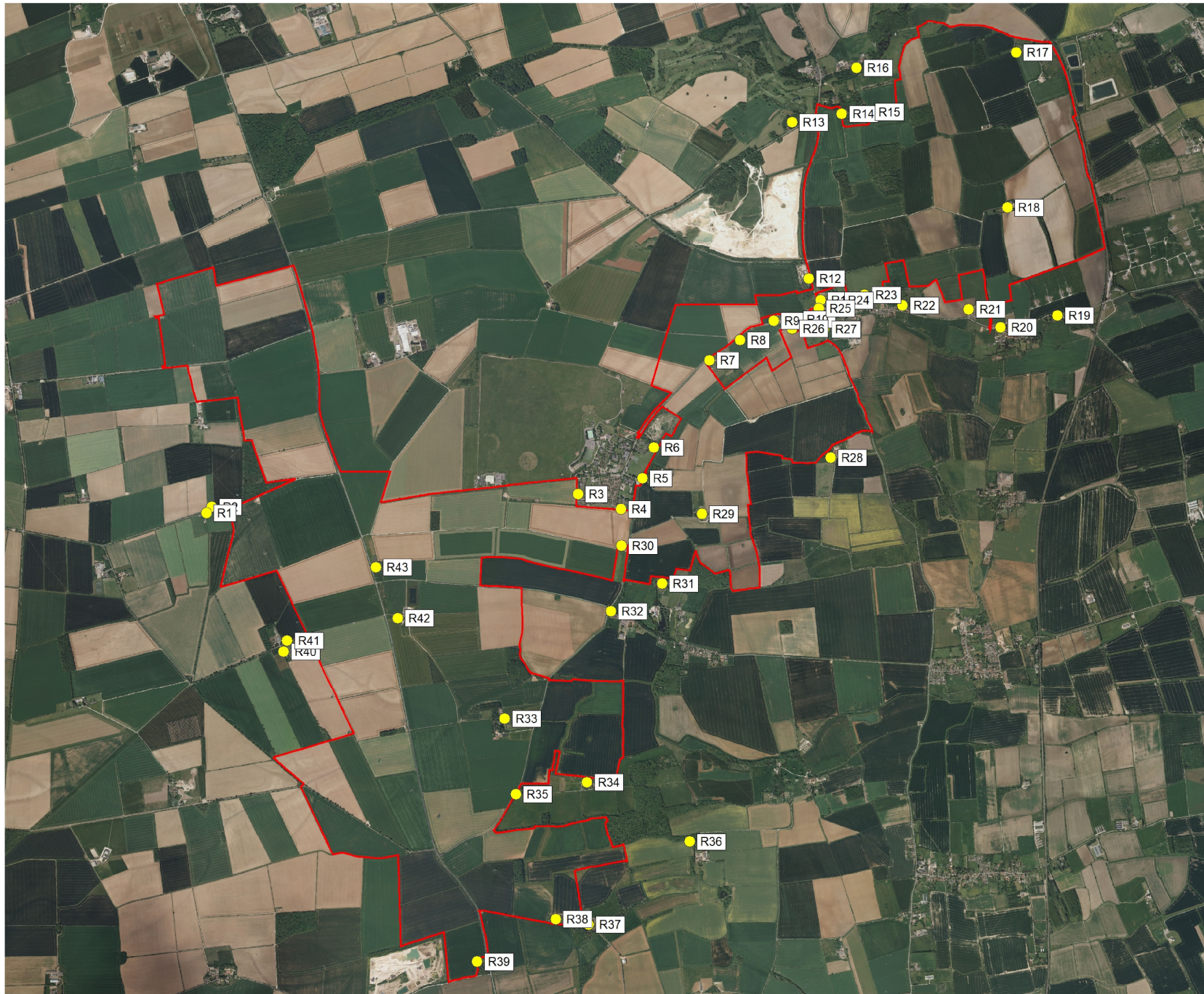


Figure 11.2

Noise Receptor Locations





LEGEND:

- Site Boundary
- Sensitive Receptor

NOTES:

Nearest receptor locations to the Proposed Development (in noise terms)

Coordinate System: British National Grid Projection;
 Transverse Mercator Datum: OSGB 1936
 Units: Meter

Rev	Date	Description	Drn	Chk	App
01	08/11/2023	Issued	JM	DC	DC
00	10/08/2023	First Draft	JM	DC	DC

Springwell Solar Farm



DOCUMENT:

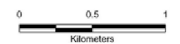
PEIR - Location Map

TITLE:

Sensitive Receptor Locations

FIGURE NUMBER:

11.2



NOT TO SCALE



REV 00